



Teams,

Load in will start with Group 1 at 10am Thursday
September 11^h.

**NO VEHICLES OF ANY KIND WILL BE PERMITTED IN THE
Paddock UNTIL AFTER THE LOAD IN IS COMPLETE.**

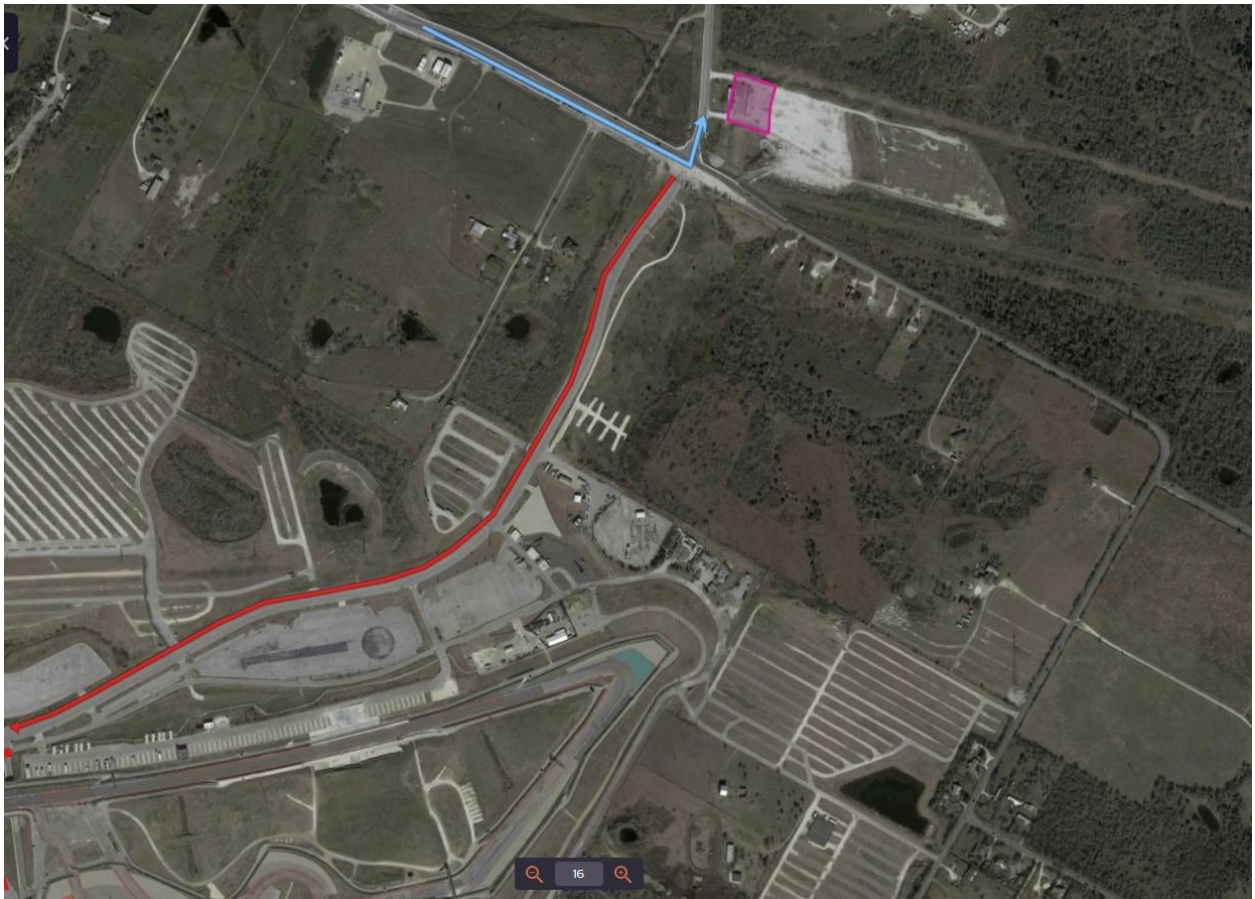
Towing will be enforced; teams will be fined \$250 for
each infraction.

Do not drill into pavement to secure awnings, you will
be fined by the track for repairs.

Questions? please email jwade@motoamerica.com

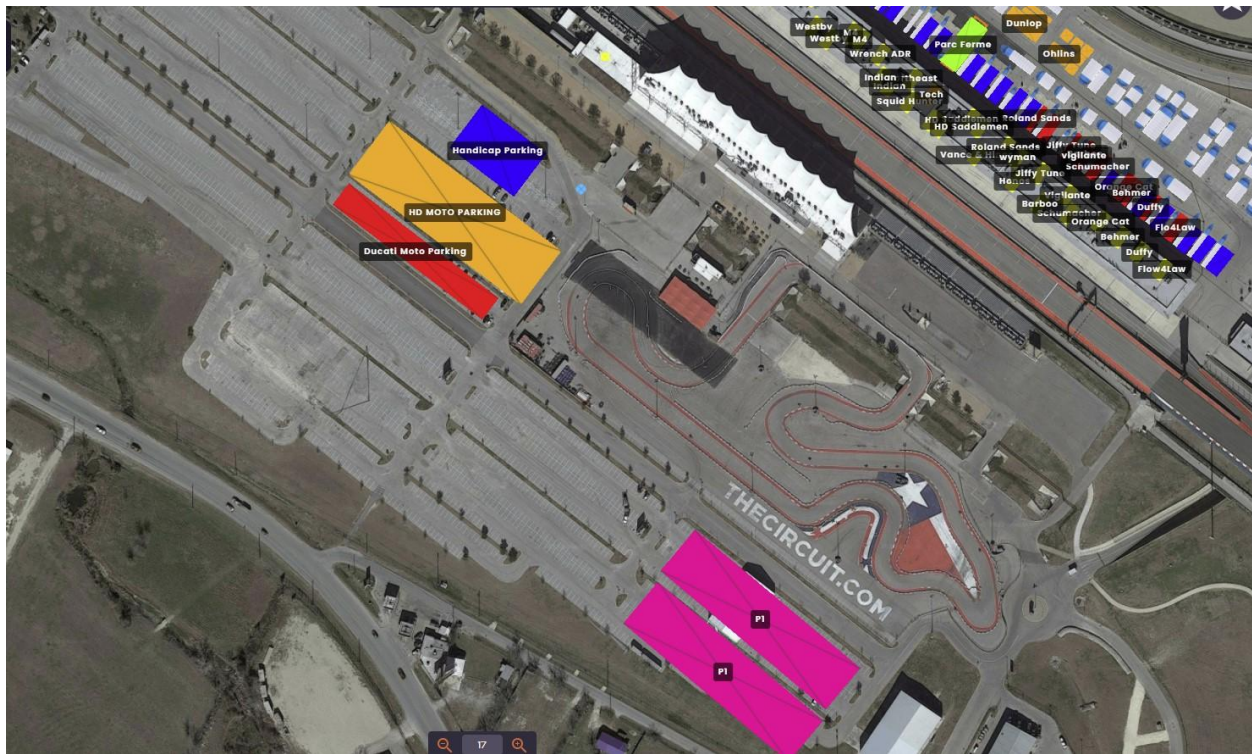
MA Registration

LOT R off Elroy Rd. at the very
end of COTA Blvd on right
indicated by the PINK BOX.



P1 Parking Location

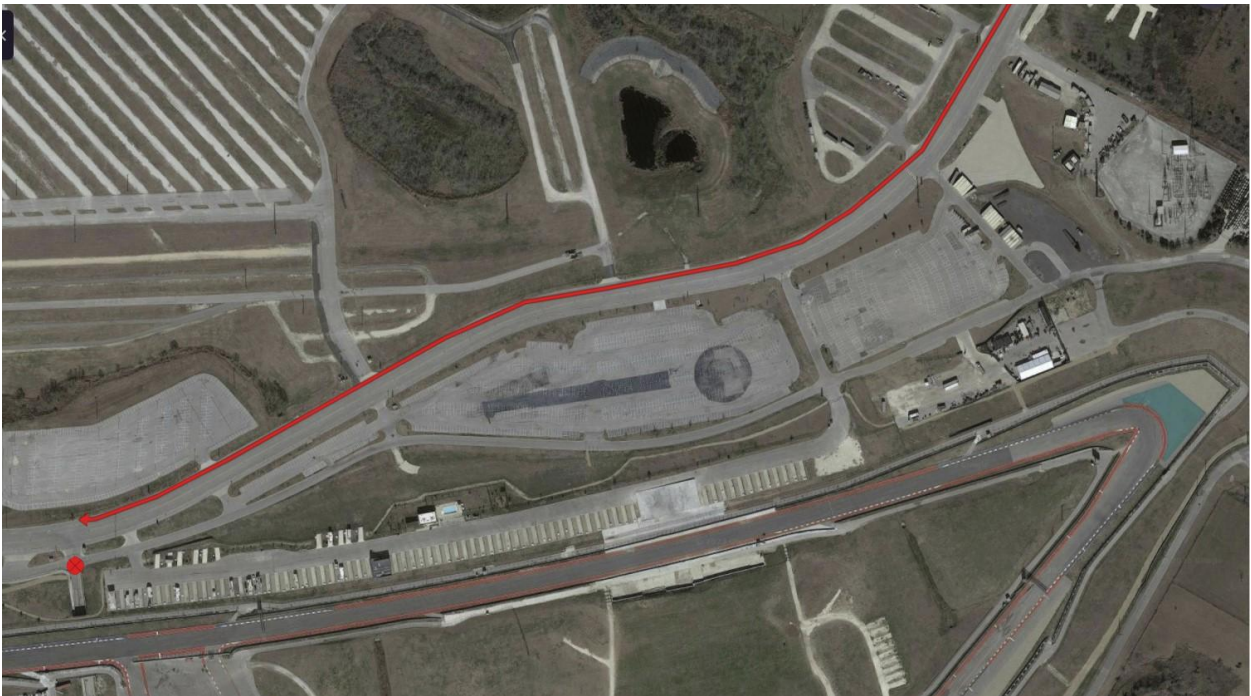
2 Pink boxes in LOT A.



STAGING

ALL TEAMS will be staged in the far-right lane along COTA Blvd. against the curb starting at Tunnel 2 and running in a single line all the way down to Elroy Rd.

See Red Line Shown Below, Red Circle is Tunnel.



LOAD IN ORDER

[illegible]

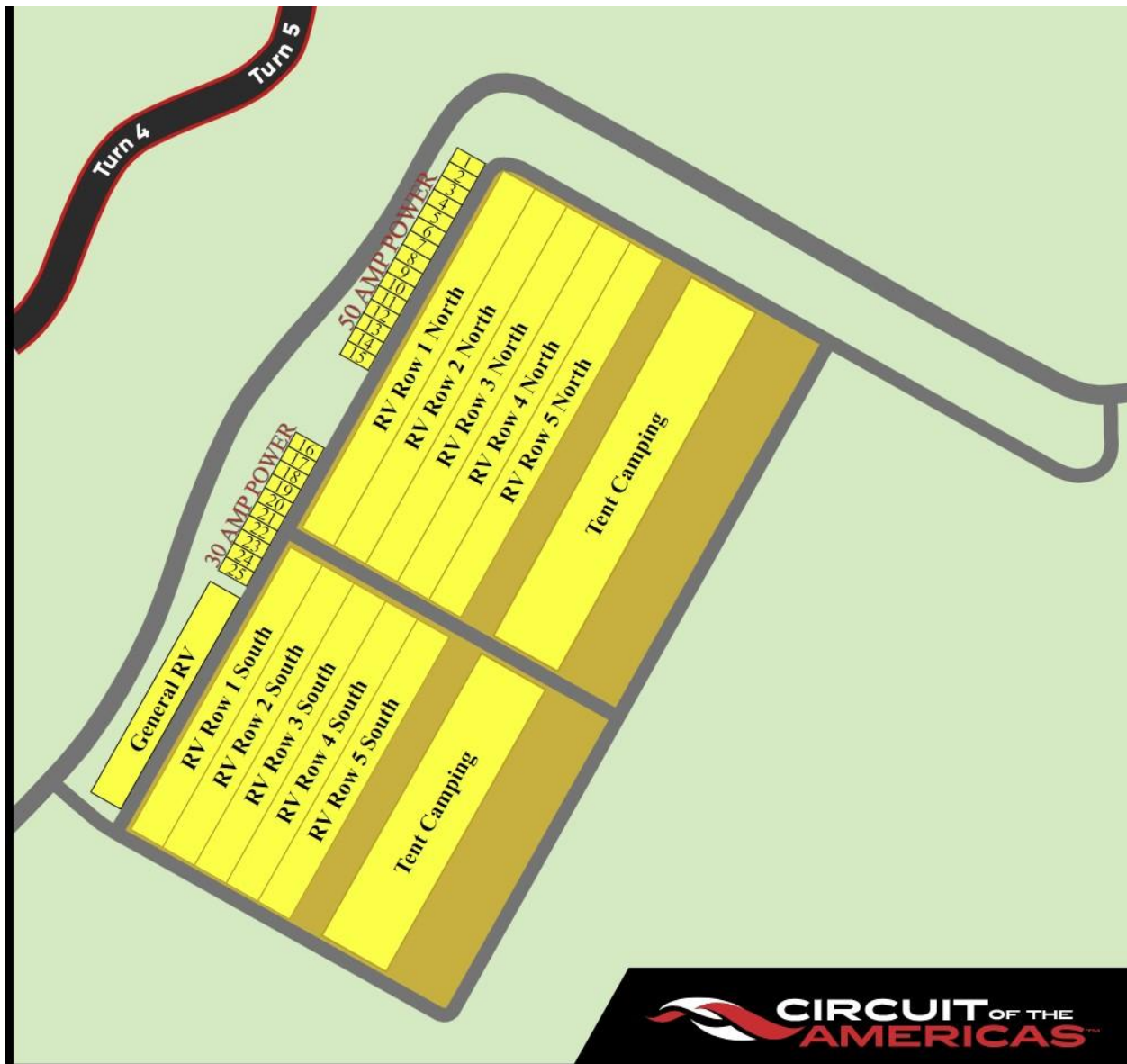
GARAGE ASSIGNMENTS

	Garages
1	Ice Barn
2	Estenson
3	Superbike Unlimited
4	Honos
5	Celtic HSBK
6	HSBK
7	Tytlers
8	Attack Yamaha
9	Attack Yamaha
10	Strack
11	M4 Hospitality (+25)
12	M4 Suzuki
13	BPR
14	BPR
15	Altus
16	Rahal Ducati (+30)
17	Orange Cat
18	MA TECH
19	Dunlop
20	Dunlop
21	3D (+25)
22	Shiebe
23	Flow4Law
24	Real Steel Honda
25	Vance & Hines (+30)
26	HD
27	HD
28	Indian
29	Indian
30	Saddlemen
31	SDI
32	Thrashed
33	MP13
34	LaRoche

RV ASSIGNMENTS

RV Spaces are dry camping only, no power, no water and First come first serve in the areas labeled “RV Row”

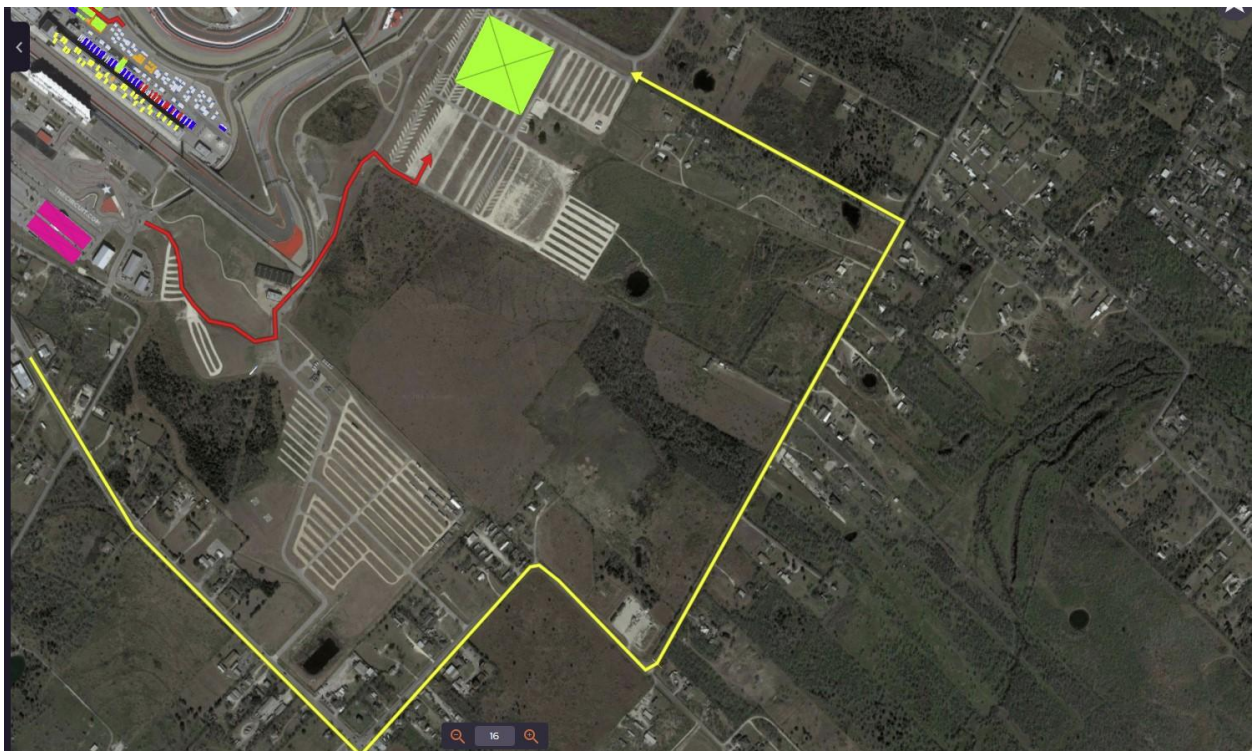
ALL THE NUMBERS SPACES ARE SOLD OUT.



The RED ARROW will take you to CAMPING LOT N from Lot A or Tunnel 1. **NOTE this route has a steep incline.

YELLOW ARROW is how to get to LOT N from Hwy 812. You turn left on Elroy Rd and Left at the Sign for LOT N.

You can enter COTA LOT N on Google Maps or Apple Maps and it will take you there.



RV Camping

[illegible]